



October



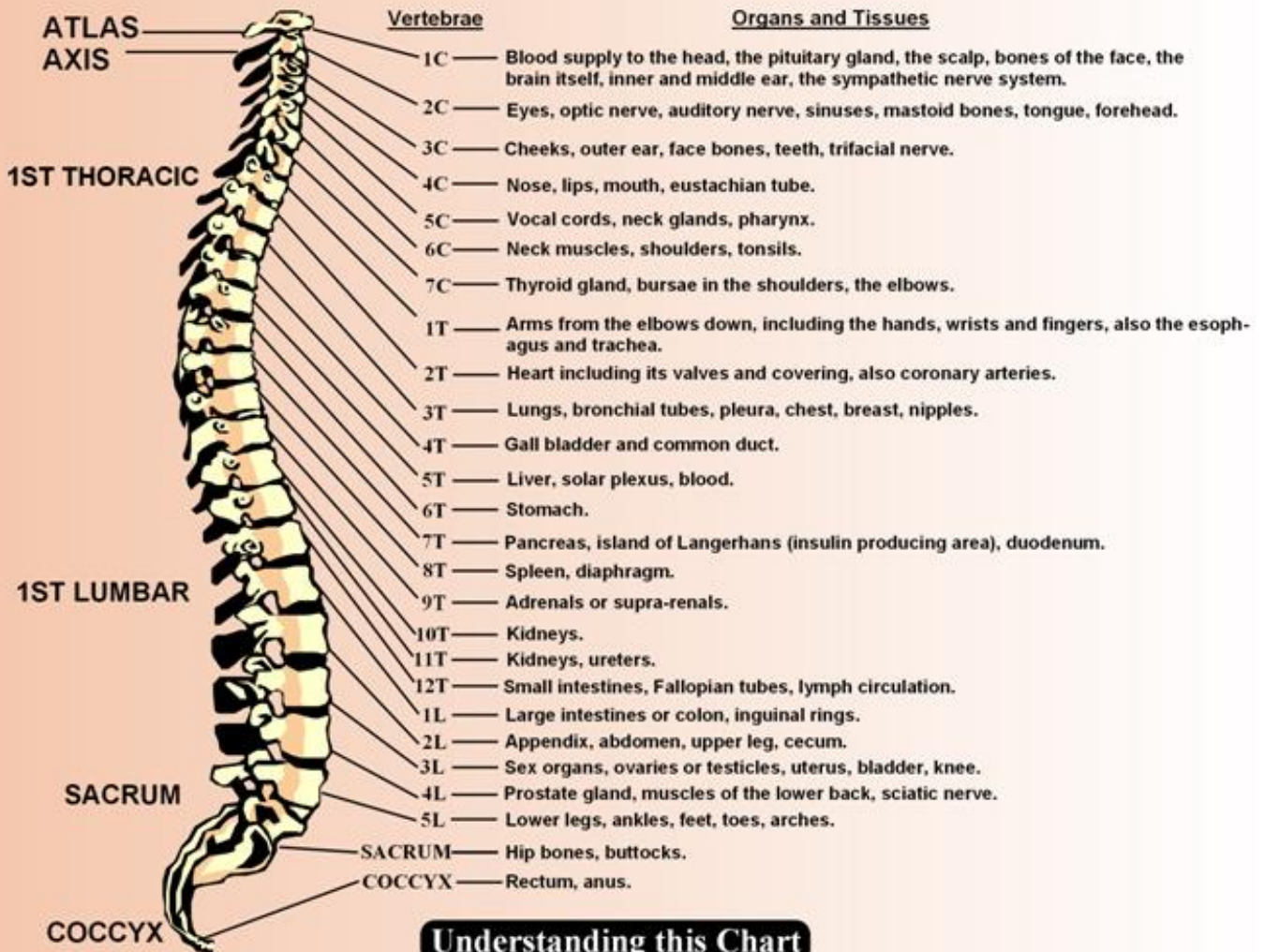
HAPPY  
COLUMBUS DAY

*Monday October 14<sup>th</sup>*



Halloween Hunt  
all month!

# The Effect of Vertebral Subluxation



## Understanding this Chart

The spinal bones house and protect the spinal cord much like the skull protects the brain. However, when one or more of these individual bones (vertebrae) misalign, they can interfere with the function of the spinal nerves, depriving organs and tissues of their vital mental impulses. This is called *vertebral subluxation*. When this happens, these organs and tissues will not function as they should. This affects the entire body because for the whole to be its best each part must be its best. The first column lists the vertebrae that your chiropractor will be examining for these vertebral subluxation. The second column lists the organs and tissues that can be supplied by nerves from that level.

## HALLOWEEN TRIVIA (answers on the bottom of this page)

1. To thrive in life you need what three bones?
2. Why didn't the skeleton go to see the scary movie?
3. Why don't skeletons like to party?
4. What forms of major education do skeletons attend?

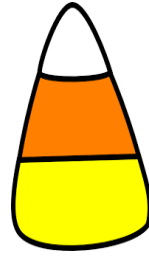




DantePierri

**Chiropractic adds  
life to years and  
years to life!**





happy HALLOWEEN

